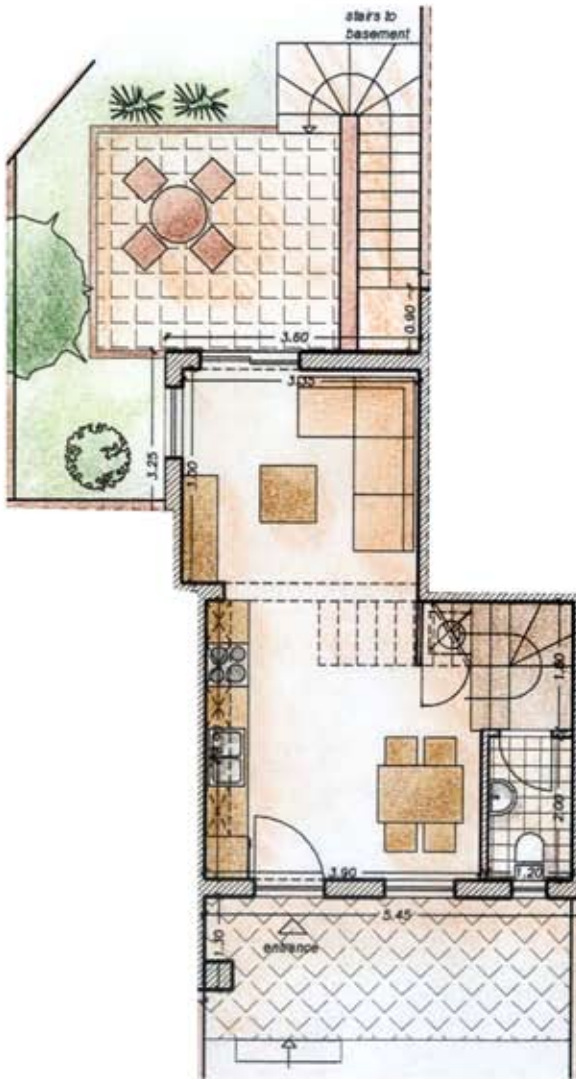


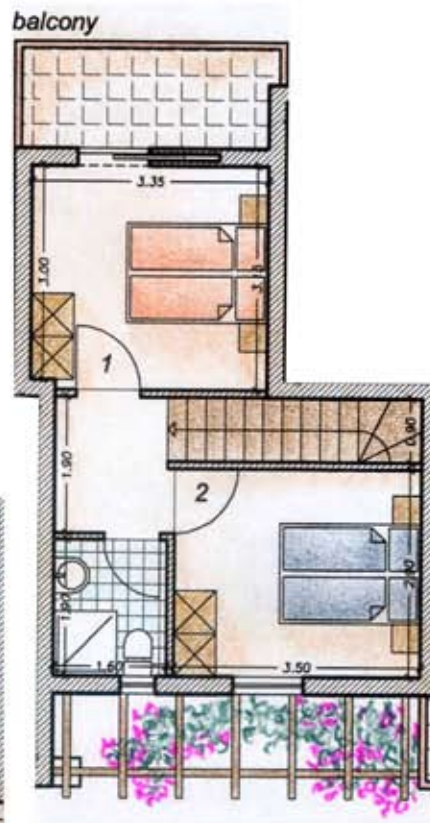
A3 FLOOR PLAN

SOURI VILLAGE
CRETE, GREECE

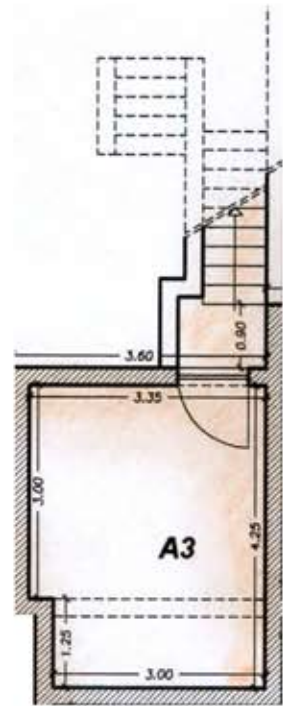
GROUND FLOOR
SIZE: 36 m²



FIRST FLOOR
SIZE: 32 m²



BASEMENT
SIZE: 17 m²



- 2 STOREY VILLA
- OPEN PLAN KITCHEN / LOUNGE
- 2 BEDROOMS
- 1 BATHROOM
- 2 TOILETS
- PRIVATE PATIO
- BASEMENT STORAGE
- ALL FURNITURE INCLUDED